

## Product Information

**Size:**

100ul

**Reactivity:**

Human, Mouse

**Source:**

Rabbit

**Isotype:**

IgG

**Applications:**

ELISA, WB

**Recommended dilutions:**

ELISA:1:2000-1:10000, WB:1:500-1:3000

**Protein Background:**

May recognize and hydrolyze the peptide bond at the C-terminal Gly of ubiquitin. Involved in the processing of poly-ubiquitin precursors as well as that of ubiquitinated proteins By similarity.

**Gene ID:**

USP43

**Uniprot**

Q70EL4

**Synonyms:**

Ubiquitin carboxyl-terminal hydrolase 43; EC=3.4.19.12; Deubiquitinating enzyme 43; Ubiquitin thiolesterase 43; Ubiquitin-specific-processing protease 43

**Immunogen:**

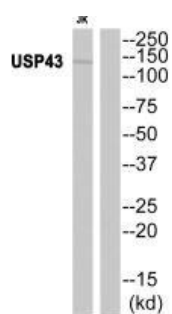
Synthesized peptide derived from internal of human USP43.

**Storage:**

Rabbit IgG in phosphate buffered saline (without Mg<sup>2+</sup> and Ca<sup>2+</sup>), pH 7.4, 150mM NaCl, 0.02% sodium azide and 50% glycerol.

## Product Images

---



Western blot analysis of extracts from JK cells, using USP43 antibody.