

ZNHIT6 Antibody



PACO22704

Product Information

Size:

100ul

Reactivity:

Human, Mouse

Source:

Rabbit

Isotype:

IgG

Applications:

ELISA, WB

Recommended dilutions:

ELISA:1:2000-1:10000, WB:1:500-1:3000

Protein Background:

Required for box C/D snoRNAs accumulation involved in snoRNA processing, snoRNA transport to the nucleolus and ribosome biogenesis.

Gene ID:

ZNHIT6

Uniprot

Q9NWK9

Synonyms:

HIT-type zinc finger-containing protein C1orf181; HIT-type zinc finger-containing protein C1orf181; C1orf181;

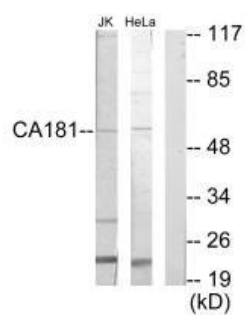
Immunogen:

Synthesized peptide derived from internal of human CA181.

Storage:

Rabbit IgG in phosphate buffered saline (without Mg²⁺ and Ca²⁺), pH 7.4, 150mM NaCl, 0.02% sodium azide and 50% glycerol.

Product Images



Western blot analysis of extracts from Jurkat cells and HeLa cells, using CA181 antibody.