

# ZSCAN25 Antibody



PACO22706

---

## Product Information

**Size:**

100ul

**Reactivity:**

Human

**Source:**

Rabbit

**Isotype:**

IgG

**Applications:**

ELISA, WB

**Recommended dilutions:**

ELISA:1:2000-1:10000, WB:1:500-1:3000

**Protein Background:**

May be involved in transcriptional regulation By similarity.

**Gene ID:**

ZSCAN25

**Uniprot**

Q6NSZ9

**Synonyms:**

Zinc finger protein 498; Zinc finger and SCAN domain-containing protein 25; ZNF498; ZSCAN25;

**Immunogen:**

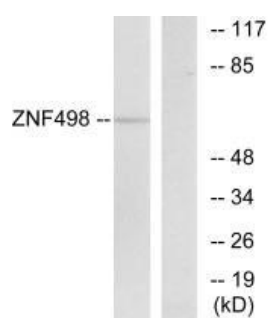
Synthesized peptide derived from internal of human ZNF498.

**Storage:**

Rabbit IgG in phosphate buffered saline (without Mg<sup>2+</sup> and Ca<sup>2+</sup>), pH 7.4, 150mM NaCl, 0.02% sodium azide and 50% glycerol.

## Product Images

---



Western blot analysis of extracts from COS-7 cells, using ZNF498 antibody.