

PLAGL1 Antibody



PACO22735

Product Information

Size:

100ul

Reactivity:

Human

Source:

Rabbit

Isotype:

IgG

Applications:

ELISA, WB

Recommended dilutions:

ELISA:1:2000-1:10000, WB:1:500-1:3000

Protein Background:

Shows weak transcriptional activatory activity. Transcriptional regulator of the type 1 receptor for pituitary adenylate cyclase-activating polypeptide.

Gene ID:

PLAGL1

Uniprot

Q9UM63

Synonyms:

Zinc finger protein PLAGL1; Pleiomorphic adenoma-like protein 1; Tumor suppressor ZAC; Lost on transformation 1; LOT-1

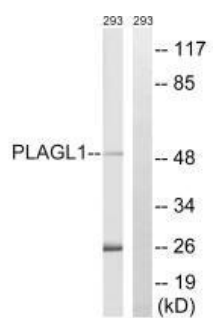
Immunogen:

Synthesized peptide derived from internal of human PLAGL1.

Storage:

Rabbit IgG in phosphate buffered saline (without Mg²⁺ and Ca²⁺), pH 7.4, 150mM NaCl, 0.02% sodium azide and 50% glycerol.

Product Images



Western blot analysis of extracts from 293 cells, using PLAGL1 antibody.