
Product Information

Size:

100ul

Reactivity:

Human, Mouse, Rat

Source:

Rabbit

Isotype:

IgG

Applications:

ELISA, WB

Recommended dilutions:

ELISA:1:2000-1:10000, WB:1:500-1:3000

Protein Background:

May play metabolic roles in sperm maturation or fertilization By similarity. Phospholipid transfer protein that preferentially selects lipid species containing a palmitoyl or stearoyl chain on the sn-1 and an unsaturated fatty acyl chain (18:1 or 18:2) on the sn-2 position. Able to transfer phosphatidylcholine (PC) and phosphatidylethanolamine (PE) between membranes.

Gene ID:

STARD10

Uniprot

Q9Y365

Synonyms:

Antigen NY-CO-28; CGI-52; MGC14401; NY-CO-28; PCTL

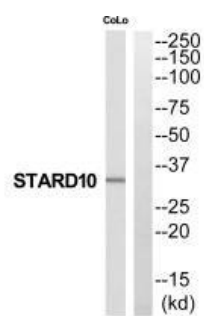
Immunogen:

Synthesized peptide derived from N-terminal of human STARD10.

Storage:

Rabbit IgG in phosphate buffered saline (without Mg²⁺ and Ca²⁺), pH 7.4, 150mM NaCl, 0.02% sodium azide and 50% glycerol.

Product Images



Western blot analysis of extracts from COLO205 cells, using STARD10 antibody.