

## Product Information

**Size:**

100ul

**Reactivity:**

Human

**Source:**

Rabbit

**Isotype:**

IgG

**Applications:**

ELISA, WB

**Recommended dilutions:**

ELISA:1:2000-1:10000, WB:1:500-1:3000

**Protein Background:**

Adapter protein and signal transducer that links members of the tumor necrosis factor receptor (TNFR) family to different signaling pathways. Plays a role in the activation of NF-kappa-B and JNK, and in the regulation of cell survival and apoptosis. Regulates activation of NF-kappa-B in response to signaling through Toll-like receptors. Required for normal skeleton development, and for normal development of the respiratory tract. By similarity. Required for activation of RPS6KB1 in response to TNF signaling. Modulates TRAF6 functions.

**Gene ID:**

TRAF4

**Uniprot**

Q9BUZ4

**Synonyms:**

TNF receptor-associated factor 4; Cysteine-rich domain associated with RING and Traf domains protein 1; Malignant 62; RING finger protein 83; TRAF4

**Immunogen:**

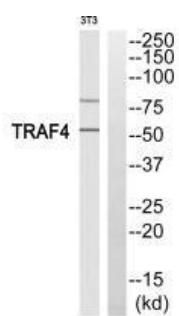
Synthesized peptide derived from internal of human TRAF4.

**Storage:**

Rabbit IgG in phosphate buffered saline (without Mg<sup>2+</sup> and Ca<sup>2+</sup>), pH 7.4, 150mM NaCl, 0.02% sodium azide and 50% glycerol.

## Product Images

---



Western blot analysis of extracts from 3T3 cells, using TRAF4 antibody.