

# BAG4 Antibody



PACO22791

---

## Product Information

**Size:**

100ul

**Reactivity:**

Human, Mouse, Rat

**Source:**

Rabbit

**Isotype:**

IgG

**Applications:**

ELISA, WB

**Recommended dilutions:**

ELISA:1:2000-1:10000, WB:1:500-1:3000

**Protein Background:**

Inhibits the chaperone activity of HSP70/HSC70 by promoting substrate release By similarity. Prevents constitutive TNFRSF1A signaling. Negative regulator of PARK2 translocation to damaged mitochondria.

**Gene ID:**

BAG4

**Uniprot**

O95429

**Synonyms:**

BAG family molecular chaperone regulator 4; BAG-4; BAG-family molecular chaperone regulator-4; BAG4; Bcl-2-associated athanogene 4

**Immunogen:**

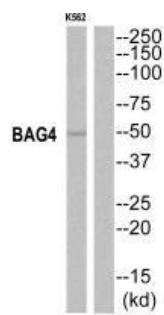
Synthesized peptide derived from C-terminal of human BAG4.

**Storage:**

Rabbit IgG in phosphate buffered saline (without Mg<sup>2+</sup> and Ca<sup>2+</sup>), pH 7.4, 150mM NaCl, 0.02% sodium azide and 50% glycerol.

## Product Images

---



Western blot analysis of extracts from K562 cells, using BAG4 antibody.