

PACO22801

Product Information

Size:

100ul

Reactivity:

Human

Source:

Rabbit

Isotype:

IgG

Applications:

ELISA, WB

Recommended dilutions:

ELISA:1:2000-1:10000, WB:1:500-1:3000

Protein Background:**Gene ID:**

MERTK

Uniprot

Q12866

Synonyms:

C-mer; kinase Mer; MERK; MERTK; proto-oncogene tyrosine-protein kinase MER precursor

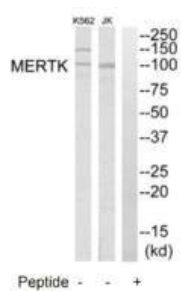
Immunogen:

Synthesized peptide derived from N-terminal of human MERTK.

Storage:

Rabbit IgG in phosphate buffered saline (without Mg²⁺ and Ca²⁺), pH 7.4, 150mM NaCl, 0.02% sodium azide and 50% glycerol.

Product Images



Western blot analysis of extracts from K562 cells and Jurkat cells, using MERTK antibody.