

PACO22812

Product Information

Size:

100ul

Reactivity:

Human

Source:

Rabbit

Isotype:

IgG

Applications:

ELISA, WB

Recommended dilutions:

ELISA:1:2000-1:10000, WB:1:500-1:3000

Protein Background:

Binds to the Fc region of immunoglobulins gamma. Low affinity receptor. By binding to IgG it initiates cellular responses against pathogens and soluble antigens. Promotes phagocytosis of opsonized antigens.

Gene ID:

FCGR2A

Uniprot

P12318

Synonyms:

Low affinity immunoglobulin gamma Fc region receptor II-a; IgG Fc receptor II-a; Fc-gamma RII-a; Fc-gamma-RIIa; FcRII-a

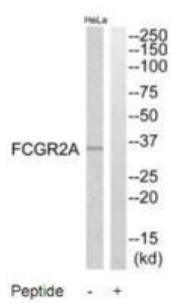
Immunogen:

Synthesized peptide derived from C-terminal of human FCGR2A.

Storage:

Rabbit IgG in phosphate buffered saline (without Mg²⁺ and Ca²⁺), pH 7.4, 150mM NaCl, 0.02% sodium azide and 50% glycerol.

Product Images



Western blot analysis of extracts from HeLa cells, using FCGR2A antibody.