

Product Information

Size:

100ul

Reactivity:

Human

Source:

Rabbit

Isotype:

IgG

Applications:

ELISA, WB

Recommended dilutions:

ELISA:1:2000-1:10000, WB:1:500-1:3000

Protein Background:

Lymphocyte inhibitory receptor which inhibits lymphocytes during immune response.

Gene ID:

BTLA

Uniprot

Q7Z6A9

Synonyms:

B and T lymphocyte associated; B and T lymphocyte attenuator; B- and T-lymphocyte attenuator; B- and T-lymphocyte-associated protein; BTLA

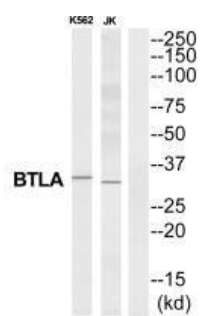
Immunogen:

Synthesized peptide derived from C-terminal of human BTLA.

Storage:

Rabbit IgG in phosphate buffered saline (without Mg²⁺ and Ca²⁺), pH 7.4, 150mM NaCl, 0.02% sodium azide and 50% glycerol.

Product Images



Western blot analysis of extracts from K562/Jurkat cells, using BTLA antibody.