
Product Information

Size:

100ul

Reactivity:

Human

Source:

Rabbit

Isotype:

IgG

Applications:

ELISA, WB

Recommended dilutions:

ELISA:1:2000-1:10000, WB:1:500-1:3000

Protein Background:

May be involved in B-cell development and differentiation in peripheral lymphoid organs and may be useful markers of B-cell stages. May have an immunoregulatory role in marginal zone B-cells.

Gene ID:

FCRL5

Uniprot

Q96RD9

Synonyms:

Fc receptor-like protein 5; FcR-like protein 5; FcRL5; Fc receptor homolog 5; FcRH5

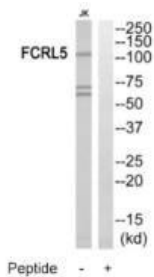
Immunogen:

Synthesized peptide derived from internal of human FCRL5.

Storage:

Rabbit IgG in phosphate buffered saline (without Mg²⁺ and Ca²⁺), pH 7.4, 150mM NaCl, 0.02% sodium azide and 50% glycerol.

Product Images



Western blot analysis of extracts from Jurkat cells, using FCRL5 antibody.