

PACO22850

---

## Product Information

**Size:**

100ul

**Reactivity:**

Human, Mouse, Rat

**Source:**

Rabbit

**Isotype:**

IgG

**Applications:**

ELISA, WB

**Recommended dilutions:**

ELISA:1:2000-1:10000, WB:1:500-1:3000

**Protein Background:**

This gene encodes a member of the sodium-dependent glucose transporter (SGLT) family. The encoded integral membrane protein is the primary mediator of dietary glucose and galactose uptake from the intestinal lumen. Mutations in this gene have been associated with glucose-galactose malabsorption. Multiple transcript variants encoding different isoforms have been found for this gene.

**Gene ID:**

SLC5A1

**Uniprot**

P13866

**Synonyms:**

NAGT; SGLT1; D22S675

**Immunogen:**

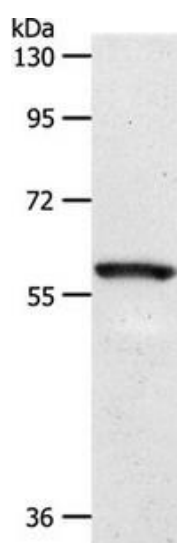
Synthetic peptide corresponding to a region derived from internal residues of human solute carrier family 5 (sodium/glucose cotransporter), member 1.

**Storage:**

Rabbit IgG in pH7.3 PBS, 0.05% NaN<sub>3</sub>, 50% Glycerol.

## Product Images

---



Gel: 10%SDS-PAGE Lysates (from left to right): Mouse eye tissue  
Amount of lysate: 40ug per lane Primary antibody: 1/1100 dilution  
Secondary antibody dilution: 1/8000 Exposure time: 2 seconds.