

RELA (Ab-468) Antibody



PACO22861

Product Information

Size:

100ul

Reactivity:

Human, Mouse, Rat

Source:

Rabbit

Isotype:

IgG

Applications:

ELISA, WB, IHC

Recommended dilutions:

ELISA:1:2000-1:10000, WB:1:500-1:1000,
IHC:1:50-1:200

Protein Background:**Gene ID:**

RELA

Uniprot

Q04206

Synonyms:

NFKB3; RELA; TF65; Transcription factor p65; p65

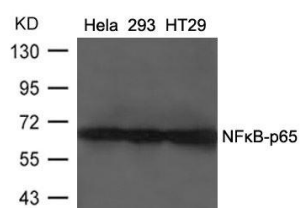
Immunogen:

Peptide sequence around aa.466~470 (L-A-S-V-D) derived from Human NFkB-p65.

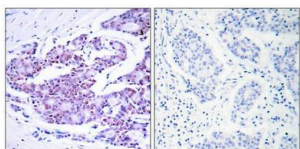
Storage:

Supplied at 1.0mg/mL in phosphate buffered saline (without Mg²⁺ and Ca²⁺), pH 7.4,
150mM NaCl, 0.02% sodium azide and 50% glycerol.

Product Images



Western blot analysis of extracts from HeLa, 293 and HT29 cells using NF kappa B-p65 (Ab-468) Antibody.



Immunohistochemical analysis of paraffin-embedded human breast carcinoma tissue using NFκB-p65(Ab-468) Antibody(left) or the same antibody preincubated with blocking peptide(right).