

NFKB1 (Ab-893) Antibody



PACO22865

Product Information

Size:

100ul

Reactivity:

Human

Source:

Rabbit

Isotype:

IgG

Applications:

ELISA, WB, IHC

Recommended dilutions:

ELISA:1:2000-1:10000, WB:1:500-1:1000,
IHC:1:50-1:200

Protein Background:**Gene ID:**

NFKB1

Uniprot

P19838

Synonyms:

DNA-binding factor KBF1; EBP-1; NF-kappa-B1 p84/NF-kappa-B1 p98; NFKB1; NFKB-p50

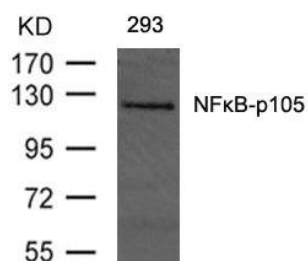
Immunogen:

Peptide sequence around aa.891~895 (A-S-S-P-V) derived from Human NFKB-p105.

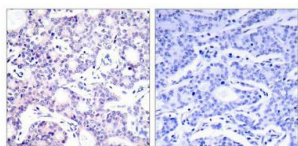
Storage:

Supplied at 1.0mg/mL in phosphate buffered saline (without Mg²⁺ and Ca²⁺), pH 7.4, 150mM NaCl, 0.02% sodium azide and 50% glycerol.

Product Images



Western blot analysis of extracts from 293 cells using NFκB-p105(Ab-893) Antibody.



Immunohistochemical analysis of paraffin-embedded human breast carcinoma tissue using NFκB-p105(Ab-893) Antibody(left) or the same antibody preincubated with blocking peptide(right).