

# STAT1 (Ab-701) Antibody



PACO22879

---

## Product Information

**Size:**

100ul

**Reactivity:**

Human, Mouse, Rat

**Source:**

Rabbit

**Isotype:**

IgG

**Applications:**

ELISA, WB, IHC

**Recommended dilutions:**

ELISA:1:2000-1:10000, WB:1:500-1:1000,  
IHC:1:50-1:200

**Protein Background:****Gene ID:**

STAT1

**Uniprot**

P42224

**Synonyms:**

CANDF7, ISGF-3, STAT91

**Immunogen:**

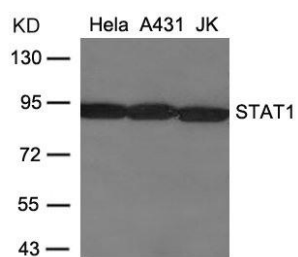
Peptide sequence around aa. 699~703 (T-G-Y-I-K) derived from Human STAT1.

**Storage:**

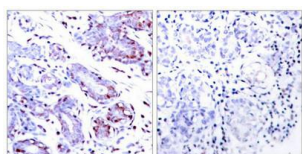
Supplied at 1.0mg/mL in phosphate buffered saline (without Mg<sup>2+</sup> and Ca<sup>2+</sup>), pH 7.4, 150mM NaCl, 0.02% sodium azide and 50% glycerol.

## Product Images

---



Western blot analysis of extracts from HeLa, A431 and JK cells using STAT1(Ab-701) Antibody.



Immunohistochemical analysis of paraffin-embedded human breast carcinoma tissue using STAT1(Ab-701) Antibody(left) or the same antibody preincubated with blocking peptide(right).