

STAT5A (Ab-780) Antibody



PACO22883

Product Information

Size:

100ul

Reactivity:

Human, Mouse, Rat

Source:

Rabbit

Isotype:

IgG

Applications:

ELISA, WB, IHC

Recommended dilutions:

ELISA:1:2000-1:10000, WB:1:500-1:1000,
IHC:1:50-1:200

Protein Background:

Carries out a dual function: signal transduction and activation of transcription. Binds to the GAS element and activates PRL-induced transcription.

Gene ID:

STAT5A

Uniprot

P42229

Synonyms:

MGF, MPF, Mammary gland factor, STA5A, STAT5

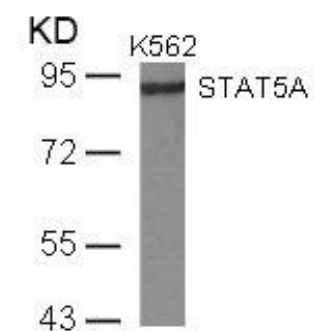
Immunogen:

Peptide sequence around aa. 778~782 (R-L-S-P-P) derived from Human STAT5A.

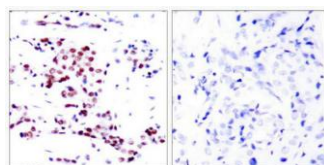
Storage:

Supplied at 1.0mg/mL in phosphate buffered saline (without Mg²⁺ and Ca²⁺), pH 7.4, 150mM NaCl, 0.02% sodium azide and 50% glycerol.

Product Images



Western blot analysis of extracts from K562 cells using STAT5A(Ab-780) Antibody.



Immunohistochemical analysis of paraffin-embedded human breast carcinoma tissue using STAT5A(Ab-780) Antibody(left) or the same antibody preincubated with blocking peptide(right).