

PTEN (Ab-380/382/383) Antibody



PACO22889

Product Information

Size:

100ul

Reactivity:

Human, Mouse, Rat

Source:

Rabbit

Isotype:

IgG

Applications:

ELISA, WB, IHC

Recommended dilutions:

ELISA:1:2000-1:10000, WB:1:500-1:1000,
IHC:1:50-1:200

Protein Background:

Gene ID:

PTEN

Uniprot

P60484

Synonyms:

MMAC1; Mutated in multiple advanced cancers 1; Protein-tyrosine phosphatase PTEN; TEP1;

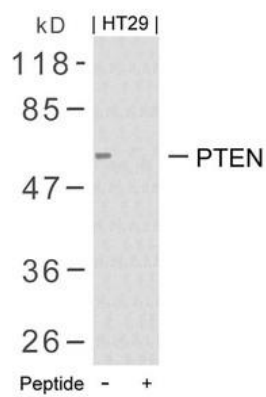
Immunogen:

Peptide sequence around aa.378~382/380~384/381~385 (R-Y-S-D-T-T-D-S) derived from Human PTEN.

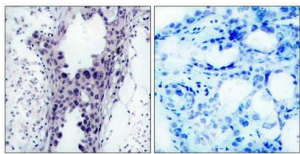
Storage:

Supplied at 1.0mg/mL in phosphate buffered saline (without Mg²⁺ and Ca²⁺), pH 7.4, 150mM NaCl, 0.02% sodium azide and 50% glycerol.

Product Images



Western blot analysis of extracts from HT29 cells using PTEN(Ab-380/382/383) Antibody and the same antibody preincubated with blocking peptide.



Immunohistochemical analysis of paraffin-embedded human breast carcinoma tissue using PTEN(Ab-380/382/383) Antibody(left) or the same antibody preincubated with blocking peptide(right).