

ERBB2 (Ab-877) Antibody



PACO22898

Product Information

Size:

100ul

Reactivity:

Human, Mouse, Rat

Source:

Rabbit

Isotype:

IgG

Applications:

ELISA, WB, IHC

Recommended dilutions:

ELISA:1:2000-1:10000, WB:1:500-1:1000,
IHC:1:50-1:200

Protein Background:**Gene ID:**

ERBB2

Uniprot

P04626

Synonyms:

C-erbB-2; ErbB2;

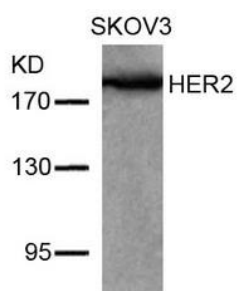
Immunogen:

Peptide sequence around aa.875~879 (T-E-Y-H-A) derived from Human HER2.

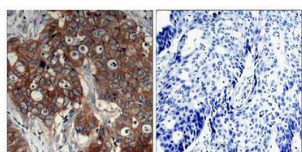
Storage:

Supplied at 1.0mg/mL in phosphate buffered saline (without Mg²⁺ and Ca²⁺), pH 7.4, 150mM NaCl, 0.02% sodium azide and 50% glycerol.

Product Images



Western blot analysis of extracts from SKOV3 cells using HER2(Ab-877) Antibody.



Immunohistochemical analysis of paraffin-embedded human breast carcinoma tissue using HER2(Ab-877) Antibody(left) or the same antibody preincubated with blocking peptide(right).