

EGFR (Ab-1092) Antibody



PACO22899

Product Information

Size:

100ul

Reactivity:

Human, Mouse, Rat

Source:

Rabbit

Isotype:

IgG

Applications:

ELISA, WB, IHC

Recommended dilutions:

ELISA:1:2000-1:10000, WB:1:500-1:1000,
IHC:1:50-1:200

Protein Background:

Receptor for EGF, but also for other members of the EGF family, as TGF- α , amphiregulin, betacellulin, heparin-binding EGF-like growth factor, GP30 and vaccinia virus growth factor. Is involved in the control of cell growth and differentia.

Gene ID:

EGFR

Uniprot

P00533

Synonyms:

Receptor tyrosine-protein kinase ErbB-1

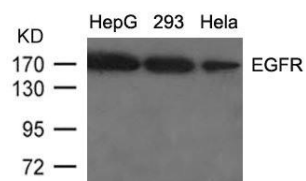
Immunogen:

Peptide sequence around aa. 1090~1094 (P-E-Y-I-N) derived from Human EGFR.

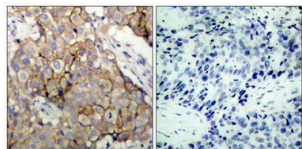
Storage:

Supplied at 1.0mg/mL in phosphate buffered saline (without Mg²⁺ and Ca²⁺), pH 7.4, 150mM NaCl, 0.02% sodium azide and 50% glycerol.

Product Images



Western blot analysis of extracts from HepG2, 293 and HeLa cells using EGFR(Ab-1092) Antibody.



Immunohistochemical analysis of paraffin-embedded human breast carcinoma tissue using EGFR(Ab-1092) Antibody(left) or the same antibody preincubated with blocking peptide(right).