

PXN (Ab-118) Antibody



PACO22907

Product Information

Size:

100ul

Reactivity:

Human, Mouse, Rat

Source:

Rabbit

Isotype:

IgG

Applications:

ELISA, WB, IHC

Recommended dilutions:

ELISA:1:2000-1:10000, WB:1:500-1:1000,
IHC:1:50-1:200

Protein Background:

Cytoskeletal protein involved in actin-membrane attachment at sites of cell adhesion to the extracellular matrix (focal adhesion).

Gene ID:

PXN

Uniprot

P49023

Synonyms:

FLJ16691; PXN;

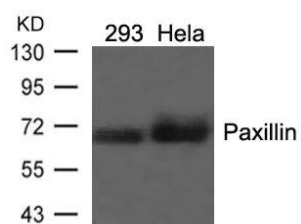
Immunogen:

Peptide sequence around aa. 116~120 (H-V-Y-S-F) derived from Human Paxillin.

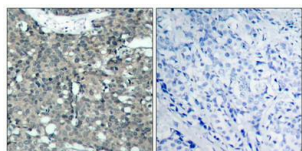
Storage:

Supplied at 1.0mg/mL in phosphate buffered saline (without Mg²⁺ and Ca²⁺), pH 7.4, 150mM NaCl, 0.02% sodium azide and 50% glycerol.

Product Images



Western blot analysis of extracts from 293 and HeLa cells using Paxillin(Ab-118) Antibody.



Immunohistochemical analysis of paraffin-embedded human breast carcinoma tissue using Paxillin(Ab-118) Antibody(left) or the same antibody preincubated with blocking peptide(right).