

JAK1 (Ab-1022) Antibody



PACO22911

Product Information

Size:

100ul

Reactivity:

Human, Mouse, Rat

Source:

Rabbit

Isotype:

IgG

Applications:

ELISA, WB, IHC

Recommended dilutions:

ELISA:1:2000-1:10000, WB:1:500-1:1000,
IHC:1:50-1:200

Protein Background:

Tyrosine kinase of the non-receptor type, involved in the IFN- α /beta/gamma signal pathway. Kinase partner for the interleukin (IL)-2 receptor.

Gene ID:

JAK1

Uniprot

P23458

Synonyms:

Janus kinase 1

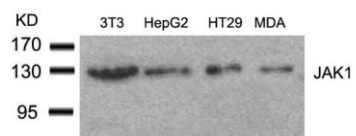
Immunogen:

Peptide sequence around aa. 1020~1024 (K-E-Y-Y-T) derived from Human JAK1.

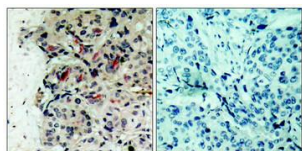
Storage:

Supplied at 1.0mg/mL in phosphate buffered saline (without Mg²⁺ and Ca²⁺), pH 7.4, 150mM NaCl, 0.02% sodium azide and 50% glycerol.

Product Images



Western blot analysis of extracts from 3T3, HepG2, HT29 and MDA cells using JAK1(Ab-1022) Antibody.



Immunohistochemical analysis of paraffin-embedded human breast carcinoma tissue using JAK1(Ab-1022) Antibody(left) or the same antibody preincubated with blocking peptide(right).