

PRKD1 (Ab-738) Antibody



PACO22913

Product Information

Size:

100ul

Reactivity:

Human, Mouse, Rat

Source:

Rabbit

Isotype:

IgG

Applications:

ELISA, WB, IF

Recommended dilutions:

ELISA:1:2000-1:10000, WB:1:500-1:1000,
IF:1:100-1:200

Protein Background:

Converts transient diacylglycerol. (DAG) signals into prolonged physiological effects, downstream of PKC. Involved in resistance to oxidative stress through activation of NF-kappa-B.

Gene ID:

PRKD1

Uniprot

Q15139

Synonyms:

nPKC-D1; Protein kinase D; Protein kinase C mu type; nPKC-mu;

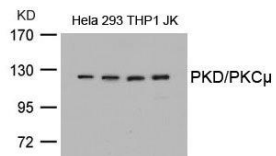
Immunogen:

Peptide sequence around aa. 736~740 (E-K-S-F-R) derived from Human PKD/PKCm.

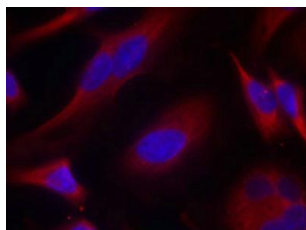
Storage:

Supplied at 1.0mg/mL in phosphate buffered saline (without Mg²⁺ and Ca²⁺), pH 7.4, 150mM NaCl, 0.02% sodium azide and 50% glycerol.

Product Images



Western blot analysis of extracts from HeLa, 293, THP1 and JK cells using PKD/PKC μ (Ab-738) Antibody.



Immunofluorescence staining of methanol-fixed HeLa cells using PKD/PKC μ (Ab-738) Antibody.