

# RPS6KA1 (Ab-348) Antibody



PACO22917

---

## Product Information

**Size:**

100ul

**Reactivity:**

Human, Mouse, Rat

**Source:**

Rabbit

**Isotype:**

IgG

**Applications:**

ELISA, WB, IF

**Recommended dilutions:**

ELISA:1:2000-1:10000, WB:1:500-1:1000,  
IF:1:100-1:200

**Protein Background:**

Serine/threonine kinase that may play a role in mediating the growth-factor and stress induced activation of the transcription factor CREB.

**Gene ID:**

RPS6KA1

**Uniprot**

Q15418

**Synonyms:**

KS6A1; MAPKAP-K1a; RPS6KA1; RSK-1; RSK1

**Immunogen:**

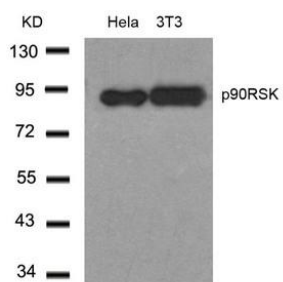
Peptide sequence around aa.346~350 (S-R-T-P-R) derived from Human p90RSK.

**Storage:**

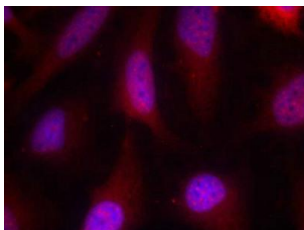
Supplied at 1.0mg/mL in phosphate buffered saline (without Mg<sup>2+</sup> and Ca<sup>2+</sup>), pH 7.4, 150mM NaCl, 0.02% sodium azide and 50% glycerol.

## Product Images

---



Western blot analysis of extracts from HeLa and 3T3 cells using p90RSK(Ab-348) Antibody.



Immunofluorescence staining of methanol-fixed HeLa cells using p90RSK(Ab-348) Antibody.