

# CDKN1B (Ab-10) Antibody



PACO22925

---

## Product Information

**Size:**

100ul

**Reactivity:**

Human, Mouse, Rat

**Source:**

Rabbit

**Isotype:**

IgG

**Applications:**

ELISA, WB, IHC

**Recommended dilutions:**

ELISA:1:2000-1:10000, WB:1:500-1:1000,  
IHC:1:50-1:200

**Protein Background:**

Important regulator of cell cycle progression. Involved in G1 arrest. Potent inhibitor of cyclin E- and cyclin A-CDK2 complexes. Positive regulator of cyclin D-dependent kinases such as CDK4. Regulated by phosphorylation and degradation events.

**Gene ID:**

CDKN1B

**Uniprot**

P46527

**Synonyms:**

CDKN1B; CDN1B; Cyclin-dependent kinase inhibitor 1B; Cyclin-dependent kinase inhibitor p27; KIP1

**Immunogen:**

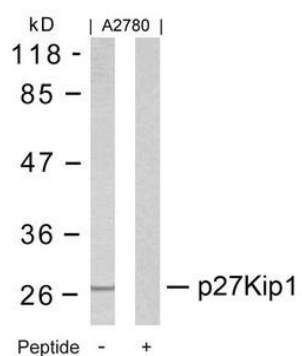
Peptide sequence around aa.8~12 (N-G-S-P-S) derived from Human p27Kip1.

**Storage:**

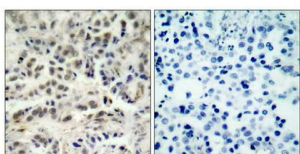
Supplied at 1.0mg/mL in phosphate buffered saline (without Mg<sup>2+</sup> and Ca<sup>2+</sup>), pH 7.4, 150mM NaCl, 0.02% sodium azide and 50% glycerol.

## Product Images

---



Western blot analysis of extracts from A2780 cells using p27Kip1(Ab-10).



Immunohistochemical analysis of paraffin-embedded human lung carcinoma tissue using p27Kip1(Ab-10).