

# CDK1 (Ab-161) Antibody



PACO22926

---

## Product Information

**Size:**

100ul

**Reactivity:**

Human, Mouse, Rat

**Source:**

Rabbit

**Isotype:**

IgG

**Applications:**

ELISA, WB, IF

**Recommended dilutions:**

ELISA:1:2000-1:10000, WB:1:500-1:1000,  
IF:1:100-1:200

**Protein Background:**

Plays a key role in the control of the eukaryotic cell cycle. It is required in higher cells for entry into S-phase and mitosis. p34 is a component of the kinase complex that phosphorylates the repetitive C-terminus of RNA polymerase II.

**Gene ID:**

CDK1

**Uniprot**

P06493

**Synonyms:**

CDC28; CDC2A; CDK1; Cyclin-dependent kinase 1;

**Immunogen:**

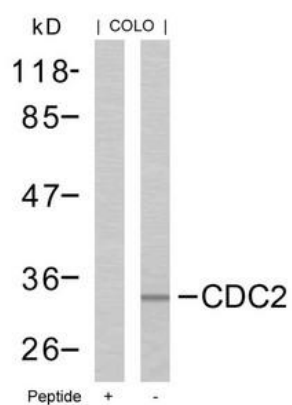
Peptide sequence around aa.159~163 (T-Y-T-H-E) derived from Human CDC2.

**Storage:**

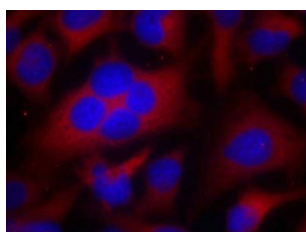
Supplied at 1.0mg/mL in phosphate buffered saline (without Mg<sup>2+</sup> and Ca<sup>2+</sup>), pH 7.4, 150mM NaCl, 0.02% sodium azide and 50% glycerol.

## Product Images

---



Western blot analysis of extracts from COLO cells using CDC2(Ab-161) Antibody and the same antibody preincubated with blocking peptide.



Immunofluorescence staining of methanol-fixed HeLa cells using CDC2(Ab-161) Antibody.