

# MYL9 (Ab-19) Antibody



PACO22928

---

## Product Information

**Size:**

100ul

**Reactivity:**

Human, Mouse, Rat

**Source:**

Rabbit

**Isotype:**

IgG

**Applications:**

ELISA, WB, IF

**Recommended dilutions:**

ELISA:1:2000-1:10000, WB:1:500-1:1000,  
IF:1:100-1:200

**Protein Background:****Gene ID:**

MYL9

**Uniprot**

P24844

**Synonyms:**

LC20, MLC2, MRLC1, MYRL2, MLC-2C

**Immunogen:**

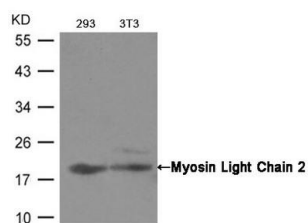
Peptide sequence around aa.17~21 (A-T-S-N-V) derived from Human Myosin Light Chain 2.

**Storage:**

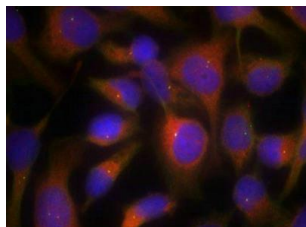
Supplied at 1.0mg/mL in phosphate buffered saline (without Mg<sup>2+</sup> and Ca<sup>2+</sup>), pH 7.4, 150mM NaCl, 0.02% sodium azide and 50% glycerol.

## Product Images

---



Western blot analysis of extracts from 293 and 3T3 cells using Myosin Light Chain 2 (Ab-19) Antibody.



Immunofluorescence staining of methanol-fixed HeLa cells using Myosin Light Chain 2 (Ab-19) Antibody.