

RAF1 (Ab-338) Antibody



PACO22948

Product Information

Size:

100ul

Reactivity:

Human, Mouse

Source:

Rabbit

Isotype:

IgG

Applications:

ELISA, WB, IHC

Recommended dilutions:

ELISA:1:2000-1:10000, WB:1:500-1:1000,
IHC:1:50-1:200

Protein Background:

Involved in the transduction of mitogenic signals from the cell membrane to the nucleus. Part of the Ras-dependent signaling pathway from receptors to the nucleus. Protects cells from apoptosis mediated by STK3.

Gene ID:

RAF1

Uniprot

P04049

Synonyms:

C-RAF; C-Raf; CRAF

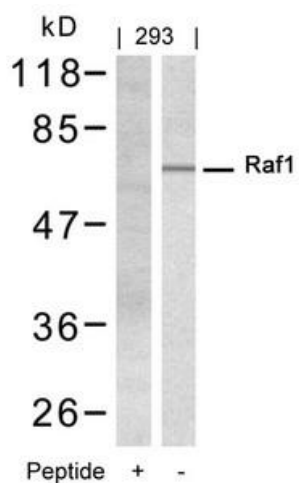
Immunogen:

Peptide sequence around aa.336~340 (R-D-S-S-Y) derived from Human RAF.

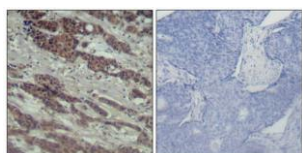
Storage:

Supplied at 1.0mg/mL in phosphate buffered saline (without Mg²⁺ and Ca²⁺), pH 7.4, 150mM NaCl, 0.02% sodium azide and 50% glycerol.

Product Images



Western blot analysis of extracts from 293 cells using Raf1(Ab-338) Antibody and the same antibody preincubated with blocking peptide.



Immunohistochemical analysis of paraffin-embedded human breast carcinoma tissue using Raf1(Ab-338) Antibody(left) or the same antibody preincubated with blocking peptide(right).