

BRCA1 (Ab-1423) Antibody



PACO22955

Product Information

Size:

100ul

Reactivity:

Human

Source:

Rabbit

Isotype:

IgG

Applications:

ELISA, WB, IHC

Recommended dilutions:

ELISA:1:2000-1:10000, WB:1:500-1:1000,
IHC:1:50-1:200

Protein Background:**Gene ID:**

BRCA1

Uniprot

P38398

Synonyms:

RNF53

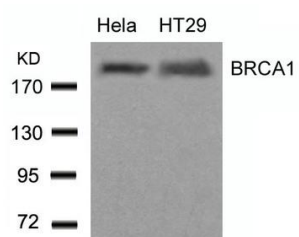
Immunogen:

Peptide sequence around aa.1421~1425 (H-G-S-Q-P) derived from Human BRCA1.

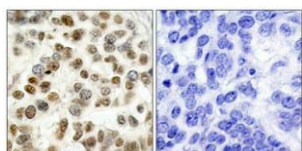
Storage:

Supplied at 1.0mg/mL in phosphate buffered saline (without Mg²⁺ and Ca²⁺), pH 7.4, 150mM NaCl, 0.02% sodium azide and 50% glycerol.

Product Images



Western blot analysis of extracts from HeLa and HT29 cells using BRCA1(Ab-1423) Antibody.



Immunohistochemical analysis of paraffin-embedded human breast carcinoma tissue using BRCA1(Ab-1423) Antibody(left) or the same antibody preincubated with blocking peptide(right).