

HSPB1 (Ab-82) Antibody



PACO22958

Product Information

Size:

100ul

Reactivity:

Human

Source:

Rabbit

Isotype:

IgG

Applications:

ELISA, WB, IHC

Recommended dilutions:

ELISA:1:2000-1:10000, WB:1:500-1:1000,
IHC:1:50-1:200

Protein Background:

Involved in stress resistance and actin organization.

Gene ID:

HSPB1

Uniprot

P04792

Synonyms:

28 kDa heat shock protein; Estrogen-regulated 24 kDa protein; Growth-related 25 kDa protein; HSP 27; HSP25

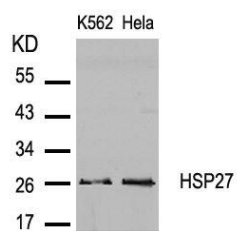
Immunogen:

Peptide sequence around aa. 80~84 (Q-L-S-S-G) derived from Human HSP27.

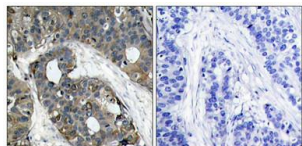
Storage:

Supplied at 1.0mg/mL in phosphate buffered saline (without Mg²⁺ and Ca²⁺), pH 7.4, 150mM NaCl, 0.02% sodium azide and 50% glycerol.

Product Images



Western blot analysis of extracts from K562 and HeLa cells using HSP27(Ab-82) Antibody.



Immunohistochemical analysis of paraffin-embedded human breast carcinoma tissue using HSP27(Ab-82) Antibody(left) or the same antibody preincubated with blocking peptide(right).