

HSF1 (Ab-303) Antibody



PACO22964

Product Information

Size:

100ul

Reactivity:

Human

Source:

Rabbit

Isotype:

IgG

Applications:

ELISA, WB, IHC

Recommended dilutions:

ELISA:1:2000-1:10000, WB:1:500-1:1000,
IHC:1:50-1:200

Protein Background:

DNA-binding protein that specifically binds heat shock promoter elements (HSE) and activates transcription. In higher eukaryotes, HSF is unable to bind to the HSE unless the cells are heat shocked.

Gene ID:

HSF1

Uniprot

Q00613

Synonyms:

HSTF 1

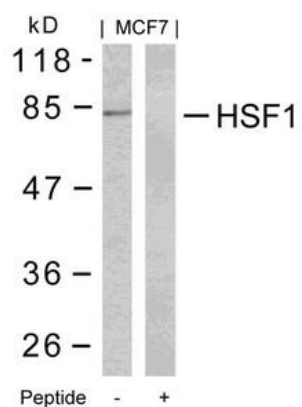
Immunogen:

Peptide sequence around aa.301~305 (P-P-S-P-P) derived from Human HSF1.

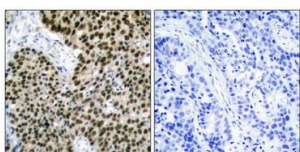
Storage:

Supplied at 1.0mg/mL in phosphate buffered saline (without Mg²⁺ and Ca²⁺), pH 7.4, 150mM NaCl, 0.02% sodium azide and 50% glycerol.

Product Images



Western blot analysis of extracts from MCF7 cells using HSF1(Ab-303) Antibody and the same antibody preincubated with blocking peptide.



Immunohistochemical analysis of paraffin-embedded human breast carcinoma tissue using HSF1(Ab-303) Antibody(left) or the same antibody preincubated with blocking peptide(right).