

CAMK2A (Ab-286) Antibody



PACO22970

Product Information

Size:

100ul

Reactivity:

Human, Mouse, Rat

Source:

Rabbit

Isotype:

IgG

Applications:

ELISA, WB, IF

Recommended dilutions:

ELISA:1:2000-1:10000, WB:1:500-1:1000,
IF:1:100-1:200

Protein Background:**Gene ID:**

CAMK2A

Uniprot

Q9UQM7

Synonyms:

CAMKA

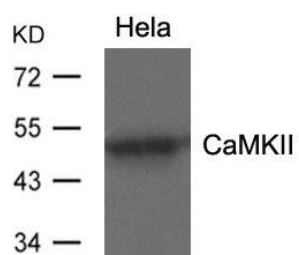
Immunogen:

Peptide sequence around aa.284~288 (Q-E-T-V-D) derived from Human CaMKII.

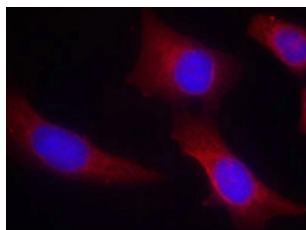
Storage:

Supplied at 1.0mg/mL in phosphate buffered saline (without Mg²⁺ and Ca²⁺), pH 7.4,
150mM NaCl, 0.02% sodium azide and 50% glycerol.

Product Images



Western blot analysis of extracts from HeLa using CaMKII(Ab-286) Antibody.



Immunofluorescence staining of paraffin-embedded human hippocampal region tissue from the falling sickness disease using CaMKII(Ab-286) Antibody.