

MAP2K1 (Ab-291) Antibody



PACO22973

Product Information

Size:

100ul

Reactivity:

Human, Mouse, Rat

Source:

Rabbit

Isotype:

IgG

Applications:

ELISA, WB, IHC

Recommended dilutions:

ELISA:1:2000-1:10000, WB:1:500-1:1000,
IHC:1:50-1:200

Protein Background:

Catalyzes the concomitant phosphorylation of a threonine and a tyrosine residue in a Thr-Glu-Tyr sequence located in MAP kinases. Activates ERK1 and ERK2 MAP kinases.

Gene ID:

MAP2K1

Uniprot

Q02750

Synonyms:

ERK activator kinase 1; MAP kinase kinase 1; MAP2K1; MAPK/ERK kinase 1; MAPKK 1

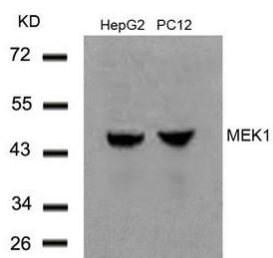
Immunogen:

Peptide sequence around aa. 289~293 (P-R-T-P-G) derived from Human MEK1.

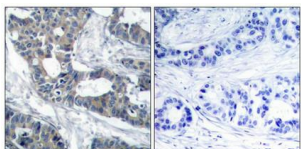
Storage:

Supplied at 1.0mg/mL in phosphate buffered saline (without Mg²⁺ and Ca²⁺), pH 7.4, 150mM NaCl, 0.02% sodium azide and 50% glycerol.

Product Images



Western blot analysis of extracts from HepG2 and PC12 cells using MEK1(Ab-291) Antibody.



Immunohistochemical analysis of paraffin-embedded human breast carcinoma tissue using MEK1(Ab-291) Antibody(left) or the same antibody preincubated with blocking peptide(right).