

SYT1 (Ab-309) Antibody



PACO22974

Product Information

Size:

100ul

Reactivity:

Human, Mouse, Rat

Source:

Rabbit

Isotype:

IgG

Applications:

ELISA, WB, IF

Recommended dilutions:

ELISA:1:2000-1:10000, WB:1:500-1:1000,
IF:1:100-1:200

Protein Background:**Gene ID:**

SYT1

Uniprot

P21579

Synonyms:

SYT1; Syt1; Synaptotagmin I; P65; SYT

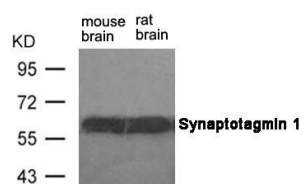
Immunogen:

Peptide sequence around aa.307~311 (G-L-S-D-P) derived from Human Synaptotagmin 1.

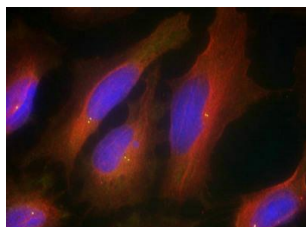
Storage:

Supplied at 1.0mg/mL in phosphate buffered saline (without Mg²⁺ and Ca²⁺), pH 7.4, 150mM NaCl, 0.02% sodium azide and 50% glycerol.

Product Images



Western blot analysis of extracts from mouse brain and rat brain tissue using Synaptotagmin 1 (Ab-309) Antibody.



Immunofluorescence staining of methanol-fixed HeLa cells using Synaptotagmin 1 (Ab-309) Antibody.