

SYT1/SYT2 (Ab-202/199) Antibody



PACO22975

Product Information

Size:

100ul

Reactivity:

Human, Mouse, Rat

Source:

Rabbit

Isotype:

IgG

Applications:

ELISA, WB, IF

Recommended dilutions:

ELISA:1:2000-1:10000, WB:1:500-1:1000,
IF:1:100-1:200

Protein Background:**Gene ID:**

SYT1/SYT2

Uniprot

P21579/Q8N9I0

Synonyms:

SYT1/2; SytI/II; Synaptotagmin I/II; P65; SYT

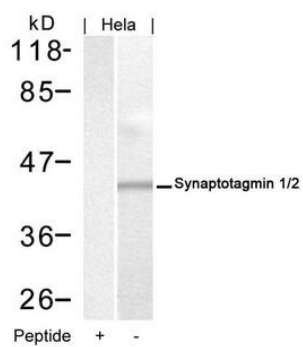
Immunogen:

Peptide sequence around aa.200~204/197~201 (R-K-T-L-N) derived from Human Synaptotagmin 1/2.

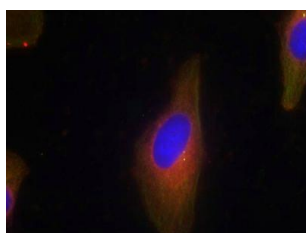
Storage:

Supplied at 1.0mg/mL in phosphate buffered saline (without Mg²⁺ and Ca²⁺), pH 7.4, 150mM NaCl, 0.02% sodium azide and 50% glycerol.

Product Images



Western blot analysis of extracts from HeLa cells using Synaptotagmin 1/2(Ab-202/199) Antibody and the same antibody preincubated with blocking peptide.



Immunofluorescence staining of methanol-fixed HeLa cells using Synaptotagmin 1/2(Ab-202/199) Antibody.