

KRT18 (Ab-33) Antibody



PACO22979

Product Information

Size:

100ul

Reactivity:

Human

Source:

Rabbit

Isotype:

IgG

Applications:

ELISA, WB, IHC

Recommended dilutions:

ELISA:1:2000-1:10000, WB:1:500-1:1000,
IHC:1:50-1:200

Protein Background:

KRT18 encodes the type I intermediate filament chain keratin 18. Keratin 18, together with its filament partner keratin 8, are perhaps the most commonly found members of the intermediate filament gene family. They are expressed in single layer epithelial tissues of the body. Mutations in this gene have been linked to cryptogenic cirrhosis. Two transcript variants encoding the same protein have been found for this gene.

Gene ID:

KRT18

Uniprot

P05783

Synonyms:

CK 18; CK18; CYK18; Cytokeratin endo B; K18

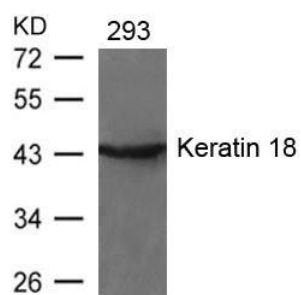
Immunogen:

Peptide sequence around aa.31~35 (A-A-S-V-Y) derived from Human Keratin 18 (CK18).

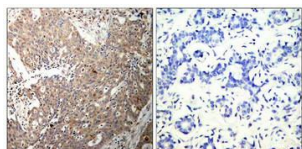
Storage:

Supplied at 1.0mg/mL in phosphate buffered saline (without Mg²⁺ and Ca²⁺), pH 7.4, 150mM NaCl, 0.02% sodium azide and 50% glycerol.

Product Images



Western blot analysis of extracts from 293 cells using Keratin 18(Ab-33) Antibody.



Immunohistochemical analysis of paraffin-embedded human breast carcinoma tissue using Keratin 18(Ab-33) Antibody(left) or the same antibody preincubated with blocking peptide(right).