

# SMAD1 (Ab-465) Antibody



PACO22981

---

## Product Information

**Size:**

100ul

**Reactivity:**

Human, Mouse, Rat

**Source:**

Rabbit

**Isotype:**

IgG

**Applications:**

ELISA, WB, IF

**Recommended dilutions:**

ELISA:1:2000-1:10000, WB:1:500-1:1000,  
IF:1:100-1:200

**Protein Background:**

Transcriptional modulator activated by BMP (bone morphogenetic proteins) type 1 receptor kinase. SMAD1 is a receptor-regulated SMAD (R-SMAD).

**Gene ID:**

SMAD1

**Uniprot**

Q15797

**Synonyms:**

Mad-related protein 1; SMAD 1; hSMAD1; Transforming growth factor-beta-signaling protein 1;

**Immunogen:**

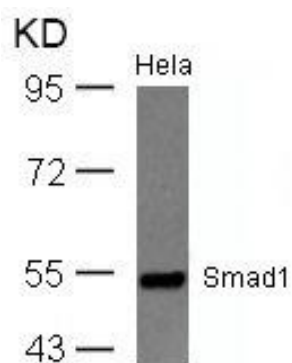
Peptide sequence around aa. 461~465 (I-S-S-V-S) derived from Human Smad1.

**Storage:**

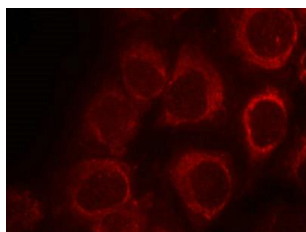
Supplied at 1.0mg/mL in phosphate buffered saline (without Mg<sup>2+</sup> and Ca<sup>2+</sup>), pH 7.4, 150mM NaCl, 0.02% sodium azide and 50% glycerol.

## Product Images

---



Western blot analysis of extracts from HeLa cells using Smad1(Ab-465) Antibody.



Immunofluorescence staining of methanol-fixed HeLa cells using Smad1(Ab-465) Antibody.