

# ERBB3 (Ab-1328) Antibody



PACO22993

---

## Product Information

**Size:**

100ul

**Reactivity:**

Human, Mouse, Rat

**Source:**

Rabbit

**Isotype:**

IgG

**Applications:**

ELISA, WB, IHC

**Recommended dilutions:**

ELISA:1:2000-1:10000, WB:1:500-1:1000,  
IHC:1:50-1:200

**Protein Background:**

Binds and is activated by neuregulins and NTAK.

**Gene ID:**

ERBB3

**Uniprot**

P21860

**Synonyms:**

Tyrosine kinase-type cell surface receptor HER3

**Immunogen:**

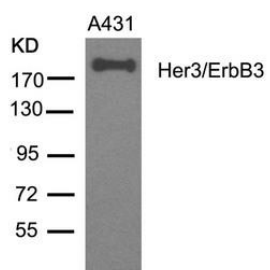
Peptide sequence around aa. 1326~1330 (P-D-Y-W-H) derived from Human Her3/ErbB3.

**Storage:**

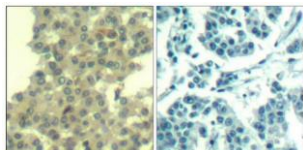
Supplied at 1.0mg/mL in phosphate buffered saline (without Mg<sup>2+</sup> and Ca<sup>2+</sup>), pH 7.4, 150mM NaCl, 0.02% sodium azide and 50% glycerol.

## Product Images

---



Western blot analysis of extracts from A431 cells using Her3/ErbB3(Ab-1328) Antibody.



Immunohistochemical analysis of paraffin-embedded human breast carcinoma tissue using Her3/ErbB3(Ab-1328) Antibody(left) or the same antibody preincubated with blocking peptide(right).