

PLCG2 (Ab-1217) Antibody



PACO22997

Product Information

Size:

100ul

Reactivity:

Human, Mouse, Rat

Source:

Rabbit

Isotype:

IgG

Applications:

ELISA, IHC, IF

Recommended dilutions:

ELISA:1:2000-1:10000, IHC:1:50-1:100,
IF:1:100-1:200

Protein Background:

The production of the second messenger molecules diacylglycerol (DAG) and inositol 1,4,5-trisphosphate (IP3) is mediated by activated phosphatidylinositol-specific phospholipase C enzymes. It is a crucial enzyme in transmembrane signaling.

Gene ID:

PLCG2

Uniprot

P16885

Synonyms:

PLC-IV; PLC-gamma2; Phospholipase C-gamma-2

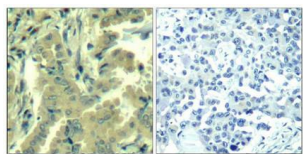
Immunogen:

Peptide sequence around aa.1215~1219 (F-L-Y-D-T) derived from Human PLCg2.

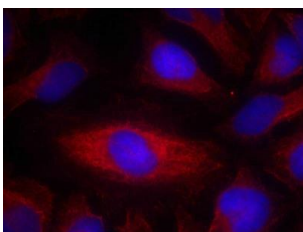
Storage:

Supplied at 1.0mg/mL in phosphate buffered saline (without Mg²⁺ and Ca²⁺), pH 7.4, 150mM NaCl, 0.02% sodium azide and 50% glycerol.

Product Images



Immunohistochemical analysis of paraffin-embedded human lung carcinoma tissue using PLC-g2(Ab-1217) Antibody(left) or the same antibody preincubated with blocking peptide(right).



Immunofluorescence staining of methanol-fixed HeLa cells using PLC-g2(Ab-1217) Antibody.