

# PXN (Ab-88) Antibody



PACO22999

---

## Product Information

**Size:**

100ul

**Reactivity:**

Human

**Source:**

Rabbit

**Isotype:**

IgG

**Applications:**

ELISA, WB, IF

**Recommended dilutions:**

ELISA:1:2000-1:10000, WB:1:500-1:1000,  
IF:1:50-1:200

**Protein Background:**

Cytoskeletal protein involved in actin-membrane attachment at sites of cell adhesion to the extracellular matrix (focal adhesion).

**Gene ID:**

PXN

**Uniprot**

P49023

**Synonyms:**

PAXI; PXN;

**Immunogen:**

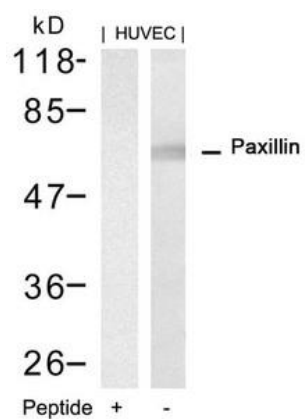
Peptide sequence around aa.86~90 (P-V-Y-G-S) derived from Human Paxillin.

**Storage:**

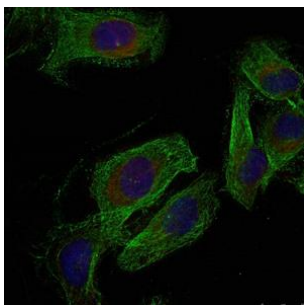
Supplied at 1.0mg/mL in phosphate buffered saline (without Mg<sup>2+</sup> and Ca<sup>2+</sup>), pH 7.4, 150mM NaCl, 0.02% sodium azide and 50% glycerol.

## Product Images

---



Western blot analysis of extracts from HUVEC cells using Paxillin(Ab-88) Antibody and the same antibody preincubated with blocking peptide.



Immunofluorescence staining of methanol-fixed HeLa cells using Paxillin(Ab-88) Antibody.