

# MET (Ab-1003) Antibody



PACO23003

---

## Product Information

**Size:**

100ul

**Reactivity:**

Human, Mouse, Rat

**Source:**

Rabbit

**Isotype:**

IgG

**Applications:**

ELISA, WB, IHC

**Recommended dilutions:**

ELISA:1:2000-1:10000, WB:1:500-1:1000,  
IHC:1:50-1:200

**Protein Background:**

Receptor for hepatocyte growth factor and scatter factor. Has a tyrosine-protein kinase activity. Functions in cell proliferation, scattering, morphogenesis and survival.

**Gene ID:**

MET

**Uniprot**

P08581

**Synonyms:**

Scatter factor receptor

**Immunogen:**

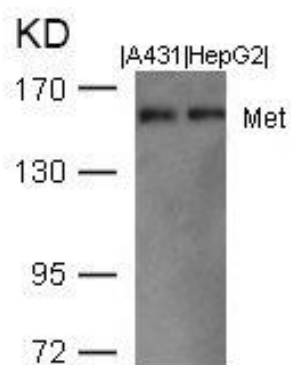
Peptide sequence around aa. 1001~1005 (V-D-Y-R-A) derived from Human Met.

**Storage:**

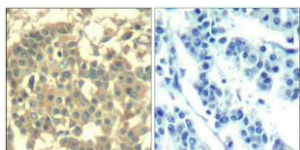
Supplied at 1.0mg/mL in phosphate buffered saline (without Mg<sup>2+</sup> and Ca<sup>2+</sup>), pH 7.4, 150mM NaCl, 0.02% sodium azide and 50% glycerol.

## Product Images

---



Western blot analysis of extracts from A431 and HepG2 cells using Met(Ab-1003) Antibody.



Immunohistochemical analysis of paraffin-embedded human breast carcinoma tissue using Met(Ab-1003) Antibody(left) or the same antibody preincubated with blocking peptide(right).