

CD44 Antibody



PACO23009

Product Information

Size:

100ul

Reactivity:

Human, Rat

Source:

Rabbit

Isotype:

IgG

Applications:

ELISA, WB, IF

Recommended dilutions:

ELISA:1:2000-1:10000, WB:1:500-1:1000,
IF:1:100-1:200

Protein Background:

Gene ID:

CD44

Uniprot

P16070

Synonyms:

LHR; MDU2; MDU3; MIC4;

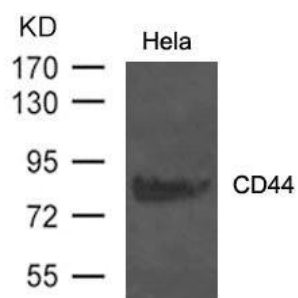
Immunogen:

Peptide sequence around aa.734~738(Q-N-V-D-M) derived from Human CD44.

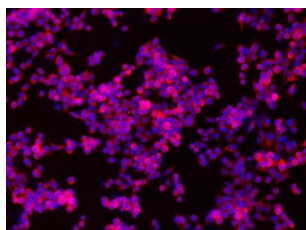
Storage:

Supplied at 1.0mg/mL in phosphate buffered saline (without Mg²⁺ and Ca²⁺), pH 7.4, 150mM NaCl, 0.02% sodium azide and 50% glycerol.

Product Images



Western blot analysis of extract from HeLa cells using CD44 Antibody.



Immunofluorescence staining of methanol-fixed NCI-h446 cells showing cytoplasmic staining using CD44 Antibody.