

# AAK1 Antibody



PACO23021

---

## Product Information

**Size:**

100ul

**Reactivity:**

Human, Mouse, Rat

**Source:**

Rabbit

**Isotype:**

IgG

**Applications:**

ELISA, WB, IHC

**Recommended dilutions:**

ELISA:1:2000-1:10000, WB:1:500-1:1000,  
IHC:1:50-1:200

**Protein Background:****Gene ID:**

AAK1

**Uniprot**

Q2M2I8

**Synonyms:**

Adaptor-associated protein kinase 1, DKFZp686K16132, KIAA1048

**Immunogen:**

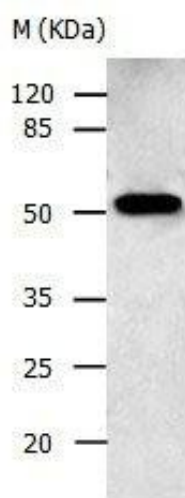
Fusion protein corresponding to N terminal 236 amino acids of Human Adaptor-associated protein kinase 1.

**Storage:**

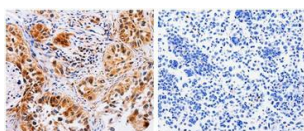
Supplied at 1.1mg/mL in phosphate buffered saline (without Mg<sup>2+</sup> and Ca<sup>2+</sup>), pH 7.3, 0.05% sodium azide and 50% glycerol.

## Product Images

---



Gel: 10%SDS-PAGE Lysate: 30 ug Human fetal brain tissue lysate Primary antibody: 1/500 dilution Secondary antibody: Donkey anti Rabbit IgG - H&L (HRP) at 1/3000 dilution Exposure time: 30 seconds.



The image on the left is immunohistochemistry of paraffin-embedded Human lung cancer tissue using 31024 (AAK1 Antibody) at dilution 1/30, on the right is treated with the fusion protein.