

# BAX (Ab-167) Antibody



PACO23032

---

## Product Information

**Size:**

100ul

**Reactivity:**

Human, Mouse

**Source:**

Rabbit

**Isotype:**

IgG

**Applications:**

ELISA, WB, IF

**Recommended dilutions:**

ELISA:1:2000-1:10000, WB:1:500-1:3000,  
IF:1:100-1:500

**Protein Background:**

Accelerates programmed cell death by binding to, and antagonizing the apoptosis repressor BCL2 or its adenovirus homolog E1B 19k protein. Under stress conditions, undergoes a conformation change that causes translocation to the mitochondrion membrane, leading to the release of cytochrome c that then triggers apoptosis. Promotes activation of CASP3, and thereby apoptosis.

**Gene ID:**

BAX

**Uniprot**

Q07812

**Synonyms:**

Apoptosis regulator BAX; membrane isoform alpha; BAXA; Bcl2-associated X protein;

**Immunogen:**

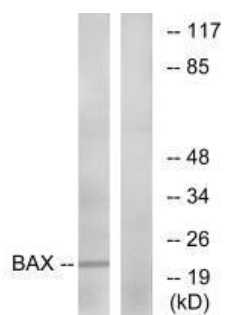
Synthesized non-phosphopeptide derived from human Bax around the phosphorylation site of threonine 167 (F-G-T(p)-P-T).

**Storage:**

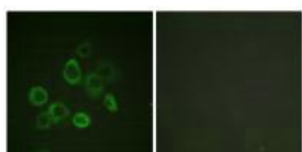
Rabbit IgG in phosphate buffered saline (without Mg<sup>2+</sup> and Ca<sup>2+</sup>), pH 7.4, 150mM NaCl, 0.02% sodium azide and 50% glycerol.

## Product Images

---



Western blot analysis of extracts from HepG2 cells, using Bax (Ab-167) antibody.



Immunofluorescence analysis of LOVO cells, using Bax (Ab-167) antibody.