

# PAK1 (Ab-199) Antibody



PACO23043

---

## Product Information

**Size:**

100ul

**Reactivity:**

Human, Mouse, Rat

**Source:**

Rabbit

**Isotype:**

IgG

**Applications:**

ELISA, WB, IHC

**Recommended dilutions:**

ELISA:1:2000-1:10000, WB:1:500-1:3000,  
IHC:1:50-1:100

**Protein Background:****Gene ID:**

PAK1

**Uniprot**

Q13153

**Synonyms:**

ADRB2; Alpha-PAK; CDC42/RAC effector kinase PAK-A; EC 2.7.11.1; P65-PAK

**Immunogen:**

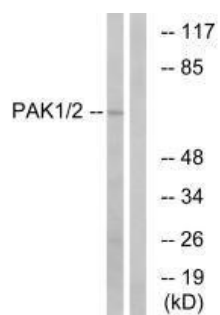
Synthesized non-phosphopeptide derived from human PAK1/2 around the phosphorylation site of serine 199 (T-K-S(p)-V-Y).

**Storage:**

Rabbit IgG in phosphate buffered saline (without Mg<sup>2+</sup> and Ca<sup>2+</sup>), pH 7.4, 150mM NaCl, 0.02% sodium azide and 50% glycerol.

## Product Images

---



Western blot analysis of extracts from K562 cells, using PAK1/2 (Ab-199) antibody.

Immunohistochemistry analysis of paraffin-embedded human placenta tissue using PAK1/2 (Ab-199) antibody.

