

CHEK2 (Ab-68) Antibody



PACO23046

Product Information

Size:

100ul

Reactivity:

Human, Mouse, Rat

Source:

Rabbit

Isotype:

IgG

Applications:

ELISA, WB, IHC

Recommended dilutions:

ELISA:1:2000-1:10000, WB:1:500-1:3000,
IHC:1:50-1:100

Protein Background:**Gene ID:**

CHEK2

Uniprot

O96017

Synonyms:

CHEK2; CHK2; Cds1; Chk2; EC 2.7.11.1

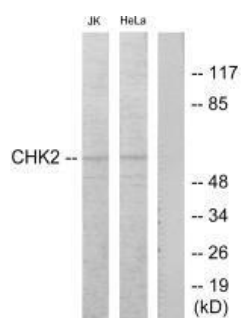
Immunogen:

Synthesized non-phosphopeptide derived from human Chk2 around the phosphorylation site of threonine 68.

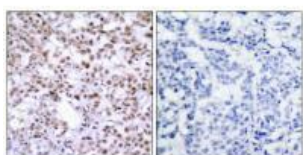
Storage:

Rabbit IgG in phosphate buffered saline (without Mg²⁺ and Ca²⁺), pH 7.4, 150mM NaCl, 0.02% sodium azide and 50% glycerol.

Product Images



Western blot analysis of extracts from Jurkat and HeLa cells treated with etoposide 25uM 24hours, using Chk2 (Ab-68) antibody.



Immunohistochemistry analysis of paraffin-embedded human breast carcinoma, using Chk2 (Ab-68) antibody.