

NFKBIA (Ab-32/36) Antibody



PACO23048

Product Information

Size:

100ul

Reactivity:

Human, Mouse, Rat

Source:

Rabbit

Isotype:

IgG

Applications:

ELISA, WB, IHC

Recommended dilutions:

ELISA:1:2000-1:10000, WB:1:500-1:3000,
IHC:1:50-1:100

Protein Background:

Inhibits the activity of dimeric NF-kappa-B/REL complexes by trapping REL dimers in the cytoplasm through masking of their nuclear localization signals. On cellular stimulation by immune and proinflammatory responses, becomes phosphorylated promoting ubiquitination and degradation, enabling the dimeric RELA to translocate to the nucleus and activate transcription.

Gene ID:

NFKBIA

Uniprot

P25963

Synonyms:

I-kappa-B-alpha; IkappaBalph; IKBA; MAD3; Major histocompatibility complex enhancer-binding protein MAD3

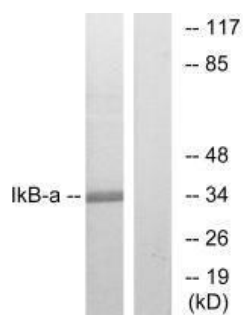
Immunogen:

Synthesized non-phosphopeptide derived from human I kappa B- alpha around the phosphorylation site of Serine 32/36.

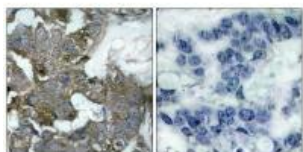
Storage:

Rabbit IgG in phosphate buffered saline (without Mg²⁺ and Ca²⁺), pH 7.4, 150mM NaCl, 0.02% sodium azide and 50% glycerol.

Product Images



Western blot analysis of extracts from MCF7 cells, treated with TNF-alpha, using IkbetaB-alpha (Ab-32/36) antibody.



Immunohistochemistry analysis of paraffin-embedded human breast carcinoma tissue, using IkbetaB-alpha (Ab-32/36) antibody.