

JUN (Ab-243) Antibody



PACO23049

Product Information

Size:

100ul

Reactivity:

Human, Mouse, Rat

Source:

Rabbit

Isotype:

IgG

Applications:

ELISA, WB, IHC

Recommended dilutions:

ELISA:1:2000-1:10000, WB:1:500-1:3000,
IHC:1:50-1:100

Protein Background:

Transcription factor that recognizes and binds to the enhancer heptamer motif 5'-TGA[CG]TCA-3'. Promotes activity of NR5A1 when phosphorylated by HIPK3 leading to increased steroidogenic gene expression upon cAMP signaling pathway stimulation.

Gene ID:

JUN

Uniprot

P05412

Synonyms:

Activator protein 1; AH119; AP-1; AP1; c-Jun

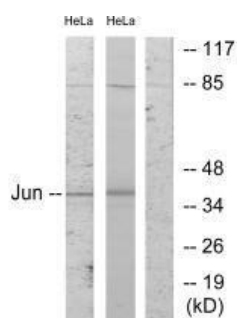
Immunogen:

Synthesized non-phosphopeptide derived from human c-Jun around the phosphorylation site of serine 243.

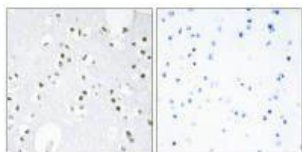
Storage:

Rabbit IgG in phosphate buffered saline (without Mg²⁺ and Ca²⁺), pH 7.4, 150mM NaCl, 0.02% sodium azide and 50% glycerol.

Product Images



Western blot analysis of extracts from HeLa cells, using c-Jun (Ab-243) antibody.



Immunohistochemistry analysis of paraffin-embedded human brain tissue, using c-Jun (Ab-243) antibody.