

RELA (Ab-311) Antibody



PACO23050

Product Information

Size:

100ul

Reactivity:

Human, Mouse, Rat

Source:

Rabbit

Isotype:

IgG

Applications:

ELISA, WB

Recommended dilutions:

ELISA:1:2000-1:10000, WB:1:500-1:3000

Protein Background:**Gene ID:**

RELA

Uniprot

Q04206

Synonyms:

NFKB3; Nuclear factor NF-kappa-B p65 subunit; RELA; TF65; Transcription factor p65

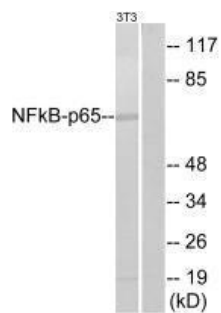
Immunogen:

Synthesized non-phosphopeptide derived from human NF- kappa B p65 around the phosphorylation site of serine 311 (F-K-S(p)-I-M).

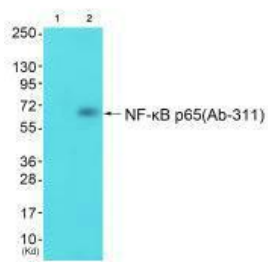
Storage:

Rabbit IgG in phosphate buffered saline (without Mg²⁺ and Ca²⁺), pH 7.4, 150mM NaCl, 0.02% sodium azide and 50% glycerol.

Product Images



Western blot analysis of extracts from NIH-3T3, using NF-kappaB p65 (Ab-311) antibody.



Western blot analysis of extracts from cos-7 cells (Lane 2), using NF-kappa B p65 (Ab-311) antibody. The lane on the left is treated with synthesized peptide.