

# EZR (Ab-478) Antibody



PACO23055

---

## Product Information

**Size:**

100ul

**Reactivity:**

Human, Mouse

**Source:**

Rabbit

**Isotype:**

IgG

**Applications:**

ELISA, WB

**Recommended dilutions:**

ELISA:1:2000-1:10000, WB:1:500-1:3000

**Protein Background:**

Probably involved in connections of major cytoskeletal structures to the plasma membrane. In epithelial cells, required for the formation of microvilli and membrane ruffles on the apical pole. Along with PLEKHG6, required for normal macropinocytosis.

**Gene ID:**

EZR

**Uniprot**

P15311

**Synonyms:**

Cytovillin; EZRI; p81; VIL2; Villin 2

**Immunogen:**

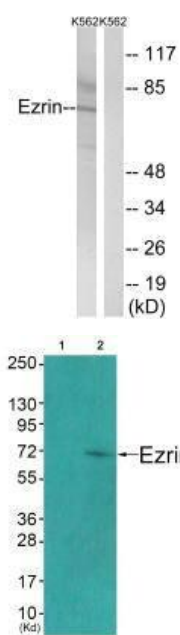
Synthesized non-phosphopeptide derived from human Ezrin around the phosphorylation site of tyrosine 478 (P-V-Y(p)-E-P).

**Storage:**

Rabbit IgG in phosphate buffered saline (without Mg<sup>2+</sup> and Ca<sup>2+</sup>), pH 7.4, 150mM NaCl, 0.02% sodium azide and 50% glycerol.

## Product Images

---



Western blot analysis of extracts from K562 cells, using Ezrin (Ab-478) antibody.

Western blot analysis of extracts from COS7 cells (Lane 2), using Ezrin (Ab-478) antibody. The lane on the left is treated with synthesized peptide.