

TP53 (Ab-378) Antibody



PACO23058

Product Information

Size:

100ul

Reactivity:

Human, Mouse

Source:

Rabbit

Isotype:

IgG

Applications:

ELISA, WB

Recommended dilutions:

ELISA:1:2000-1:10000, WB:1:500-1:3000

Protein Background:**Gene ID:**

TP53

Uniprot

P04637

Synonyms:

Antigen NY-CO-13; Cellular tumor antigen p53; Phosphoprotein p53; TP53; tumor protein p53

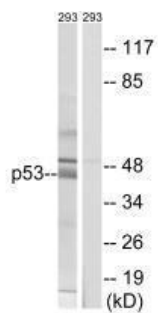
Immunogen:

Synthesized non-phosphopeptide derived from human p53 around the phosphorylation site of serine 378 (S-T-S(p)-R-H).

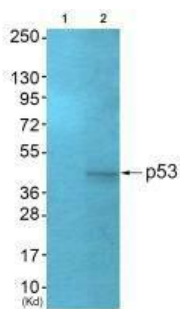
Storage:

Rabbit IgG in phosphate buffered saline (without Mg²⁺ and Ca²⁺), pH 7.4, 150mM NaCl, 0.02% sodium azide and 50% glycerol.

Product Images



Western blot analysis of extracts from 293 cells, using p53 (Ab-378) antibody.



Western blot analysis of extracts from HepG2 cells (Lane 2), using p53 (Ab-378) antibody. The lane on the left is treated with synthesized peptide.